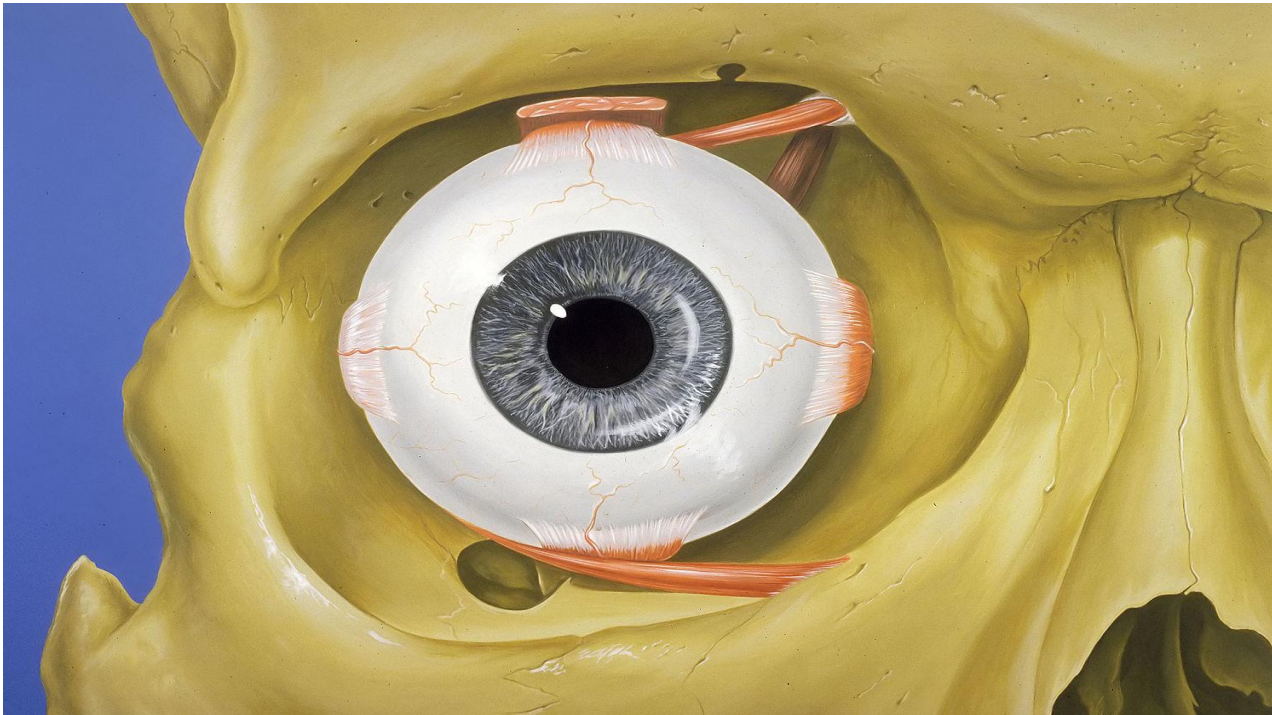


المرحلة : الاولى
القسم : تقنيات فحص البصر
المادة: فسلجة نظري



Ali kadhim mohsin

Accessory visual structures



Eyebrow

- The eyebrow is an area of thick, short hairs above the eye. The main function is to prevent sweat, water, and other debris falling into the eye, but they are also important to human communication and facial expressions.

Eyebrow



Eyelid

- An eyelid is a thin fold of skin that covers and protects the eye. The levator palpebrae superioris muscle helps in the movement of eyelid. The human eyelid features a row of eyelashes along the eyelid margin, which helps in protection of the eye from dust and foreign debris. The main function of eyelid is to keep the cornea moist and clean.

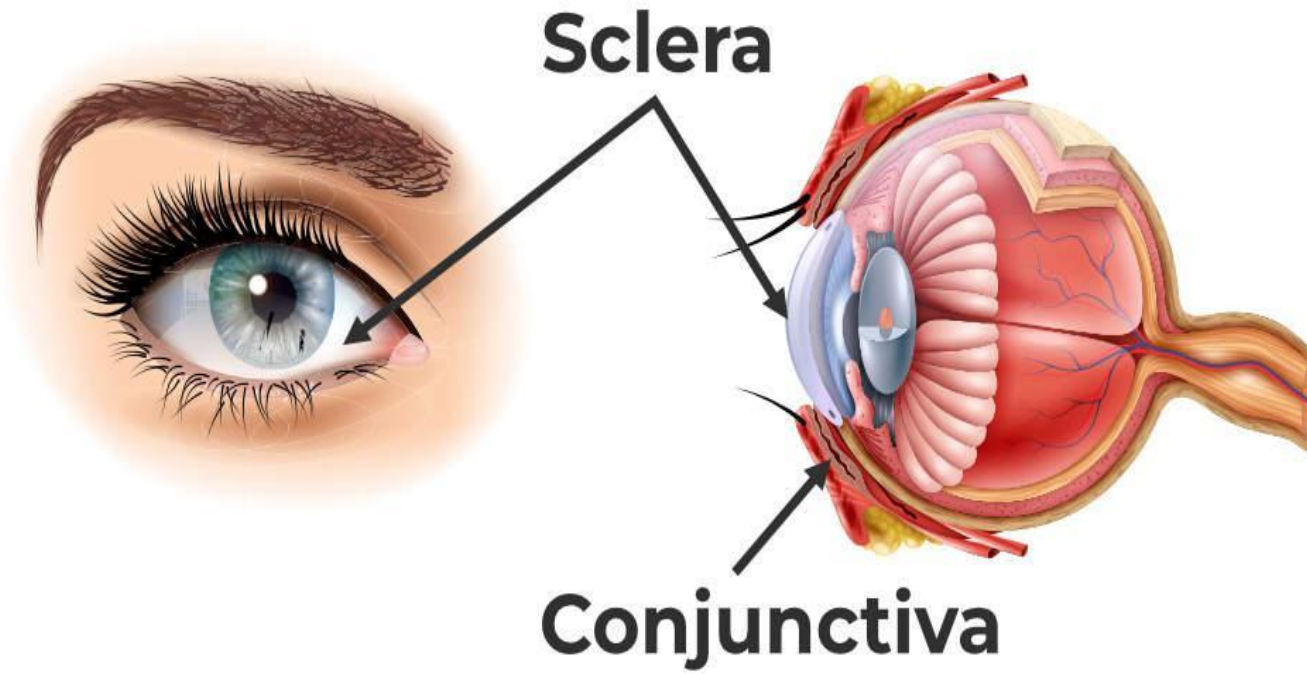
Eyelid



Conjunctiva

- The conjunctiva is a tissue that lines the inside of the eyelids and covers the sclera. It is composed of unkeratinized, stratified squamous epithelium with goblet cells, and stratified columnar epithelium. The conjunctiva is basically transparent, and the white colour we see is actually sclera.

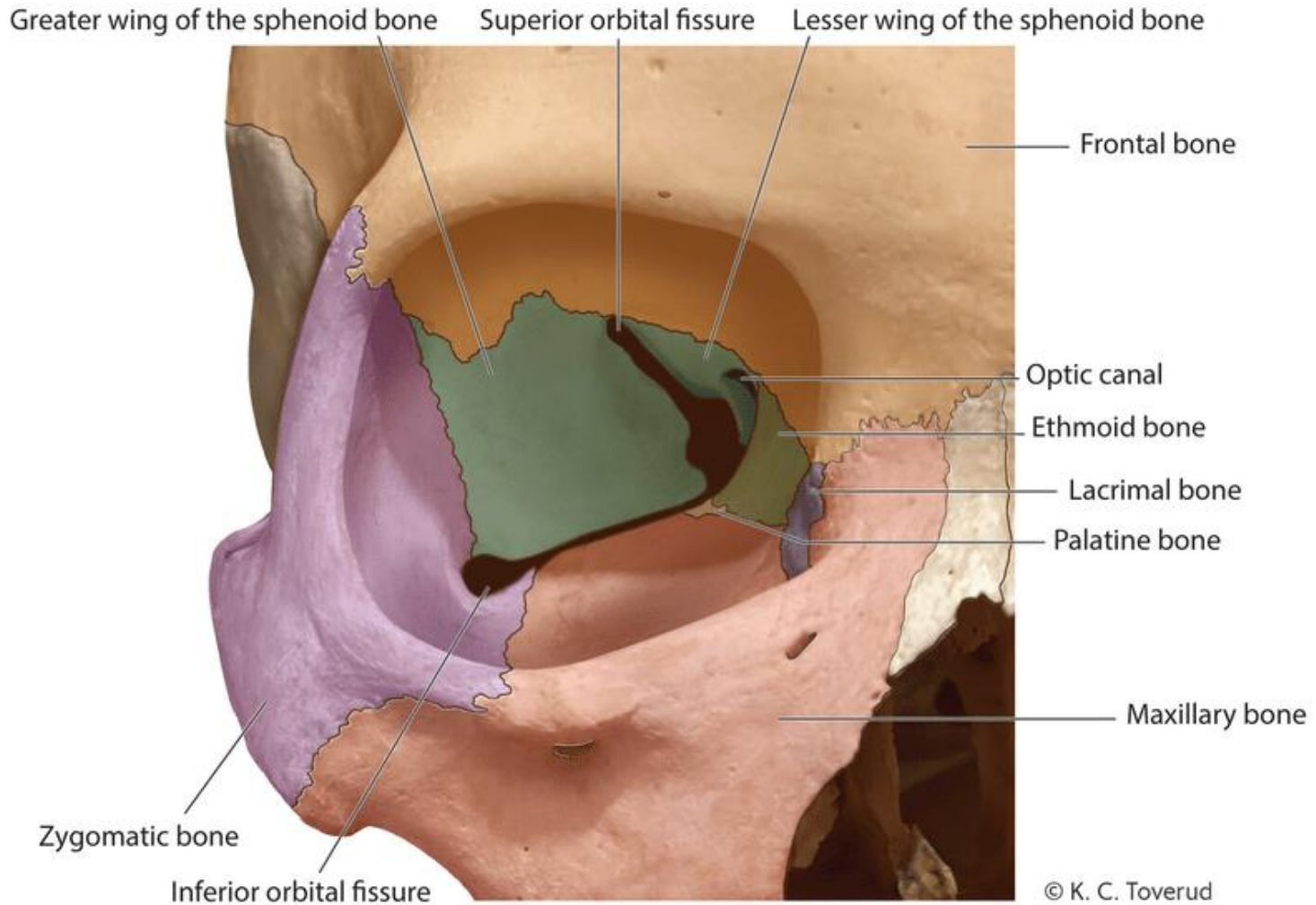
Conjunctiva



The orbit

- The orbit is the cavity or socket of the skull in which the eye and its appendages are situated. In the adult human, the volume of the orbit is 30 millilitres (1.1 imp fl oz; 1.1 US fl oz), of which the eye occupies 7.0 ml (0.23 imp fl oz; 0.22 US fl oz). **The orbit helps in smooth rotation of the eyeball**

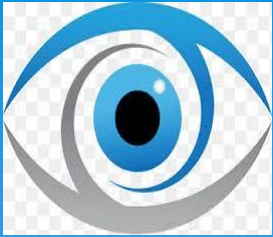
The orbit





Thank You

المرحلة : الاولى
القسم : تقنيات فحص البصر
المادة: فسلجة نظري
المحاضرة هـ



Ali kadhim mohsin

Vitreous humour

Learning Objectives

Understand the composition and function of the vitreous gel.

